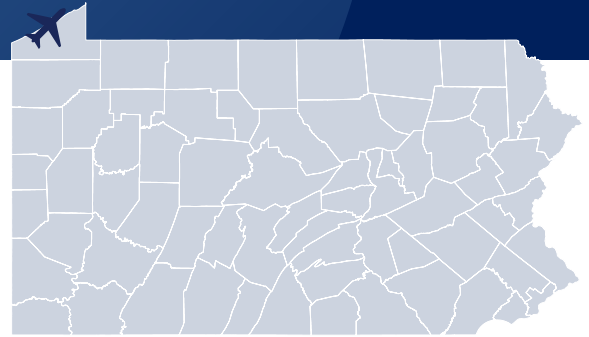


Erie International/Tom Ridge Field (ERI) is a commercial service airport located directly west of Erie, along Pennsylvania's coastline with Lake Erie. The airport began operating at its current location in 1929 and was among the earliest in the nation to be licensed as a commercial airport. The airport offers commercial service through United, Delta, and American Airlines with service to major hubs, including Charlotte, Chicago O'Hare, Washington-Dulles, Buffalo, and more. In addition to commercial service offerings, the airport also supports a variety of general aviation operations, including corporate and business activities and by the North Coast Flight School for training and flight instruction. Located only two miles from Lake Erie, travelers can enjoy beautiful views of the lake and Presque Isle State Park. Travelers can easily access the sights and other recreational activities the lake area provides, such as biking, walking, and jogging throughout the state park.



This airport is classified as a Commercial Service Airport in Pennsylvania's State Aviation System Plan and is eligible to receive federal funding from the FAA.

About the Airport

CITY: Erie

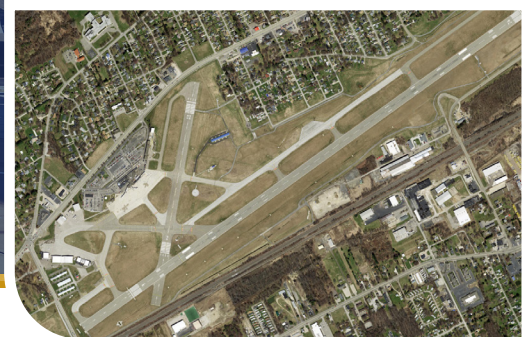
COUNTY: Erie

OWNERSHIP: Public

PENNDOT DISTRICT: 1

PRIMARY RUNWAY: 6/24, 8,420'

Source: Pennsylvania Spatial Data Access (PASDA), 2022



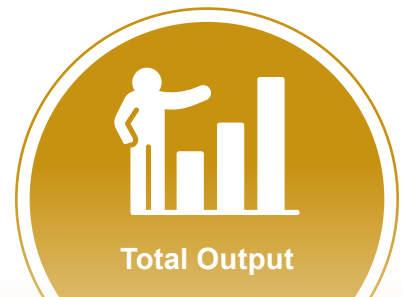
ERI Economic Impacts



956 JOBS



\$46,021,300



\$136,196,900

Key Airport Activities



Commercial Service



**Corporate/
Business Activity**



Air Charter



**Military Exercises/
Training**



**Career Training
and Flight
Instruction**

All impacts shown were calculated for calendar year 2019, representing a typical year. Impacts for calendar year 2020 were also calculated to understand the impacts of COVID-19 on aviation in the state. 2020 impacts can be found in the PA AEIS Technical Report.

Erie International/ Tom Ridge Field's Economic Impact



Employment



Payroll



Output

	Employment	Payroll	Output
On-Airport Activity	179	\$13,178,900	\$45,557,100
Commercial Service Visitor Spending	395	\$10,199,400	\$28,158,300
General Aviation Visitor Spending	19	\$496,800	\$1,377,400
Total Direct Impacts	593	\$23,875,100	\$75,092,800
Total Multiplier Impacts	363	\$22,146,100	\$61,104,100
Total Impacts	956	\$46,021,300	\$136,196,900

Note: Totals may not sum due to rounding. Sources: Calculations using IMPLAN, 2019, 2020; Kimley-Horn, 2022.

Economic Impact Categories



Employment:

The total number of persons employed that are associated with business revenues and payroll, regardless of whether they are full-time or part-time.



Payroll:

Total employment compensation including wages and other benefits (e.g., health care insurance payments, retirement contributions, etc.)



Output:

Includes expenditures needed to administer airports, sales of goods and services by airport tenants, budget expenditures by public sector agencies located on airports, cost of capital expenditures, visitor spending in Pennsylvania's hospitality-related sectors, and sales enabled by air cargo services. This is also referred to as "business revenues" or sales.

Direct Impacts: Initial impacts that occur on- and off-airport, such as airport operations, construction, airport tenants, visitor spending, and more.

Multiplier Impacts: Includes "indirect" and "induced" impacts generated when portions of direct revenues are used to purchase goods and services from PA businesses and when workers re-spend their income in the state.

Total Statewide Aviation Impacts

The statewide economic impact of Pennsylvania's airports consists of two major categories: On-Airport Activity and Off-Airport Activity. Together, they account for approximately **\$34.2 billion in economic impact for Pennsylvania.**

**\$34.1
BILLION**

**TOTAL
OUTPUT**

On-Airport and Nearby Activity

Impacts related to the activity of airport administration, business tenants, and capital improvements on airports.

**\$19.2
BILLION**

Off-Airport Activity

Impacts related to out-of-state visitor spending at both commercial service and general aviation airports.

✈️ Commercial Service Visitor Spending

Impacts related to spending by out-of-state visitors arriving to stay in Pennsylvania via the state's commercial service airports.

**\$14.7
BILLION**

✚ General Aviation Visitor Spending

Impacts related to spending by out-of-state visitors arriving to stay in Pennsylvania via the Commonwealth's general aviation airports.

**\$213.9
MILLION**

Total Output of Other Aviation-Related Impacts in Pennsylvania

Off-Airport Aerospace Manufacturing

\$8.7 BILLION

Off-Airport Air Cargo

\$1.1 BILLION

Off-Airport Private Hospital Heliports

\$150 MILLION