

# 2023 Transportation Alternatives Set-Aside Statewide Application Round

---

## Welcome and Opening Remarks

Brian D. Hare, P.E.  
Director

Pennsylvania Department of Transportation  
Center for Program Development and Management

*•Please be advised that this meeting is being recorded for future use and sharing.*

# Housekeeping



## **Questions must be entered into the chat box**

- Answers will follow at end of presentation
- All questions will be part of a Q&A document



## **Information will be available on Transportation Alternatives (TA) Set-Aside website after presentation:**

- PowerPoint presentation
- Recording of presentation
- Q&A for all questions received during presentation



# Presentation Overview

- TA Set-Aside Background
- Guidance and Procedures Document
- Eligibility
  - Projects and Sponsors
- Funding
- TA Set-Aside Website
- Application Process
  - Application Review
- Application Timeline
- Project Review and Selection
- Requirements for Selected Projects



# TA Set-Aside Background

- Infrastructure Investment and Jobs Act (IIJA) of 2021
  - Continuation of TE/TAP Legacy Programs
- Reimbursement Program
- 100% Federal Construction Funding
  - Including construction inspection





# Eligible Projects

- Bicycle and pedestrian facilities
- Bicycle and pedestrian education (grades K-12)
- Conversion of abandoned railway corridors to trails
- Construction of turnouts, overlooks, and viewing areas
- Outdoor advertising management
- Historic preservation and rehab of historic transportation facilities
- Vegetation management
- Archaeological activities
- Stormwater management
- Wildlife mortality mitigation
- Vulnerable road user assessment activity





# Safe Routes To School Overview

- Project must be within 2 miles of a public or private school
- New for 2023: K-12 schools are eligible
- Must apply through TASA process



# Safe Routes To School Projects

## Eligible Projects/Programs

- Infrastructure projects
  - Such as repairing or building sidewalks or bike paths
- Non-infrastructure programs and events that educate and encourage walking and biking
  - Such as bicycle safety lessons, bike helmet giveaways, or bike rodeos





# Project Eligibility Determinations

- For projects that do not clearly fit guidance
- **NOT** required in order to submit an application
  - To submit an eligibility determination, the sponsor must compose an email to [RA-pdTASA@pa.gov](mailto:RA-pdTASA@pa.gov) and provide an overview of the proposed project activities and describe how they align with an eligible project category (or categories).
  - Supporting attachments should be provided, if applicable.



# Eligible Project Sponsors

- Local governments
- Regional transportation authorities
- Transit agencies
- Natural resource or public land agencies, including Federal agencies
- School districts, local education agencies, or schools
- Tribal governments
- A nonprofit entity
- Any other local or regional governmental entity with responsibility for oversight of transportation or recreational trails
- MPOs that serve an urbanized area with a population of 200,000 or fewer
- A state, at the request of an eligible entity listed above



# Available Funding

## Statewide

- ~\$28 million in TA Set-Aside Funds
- Safe Routes to School funds also available, based upon eligible projects

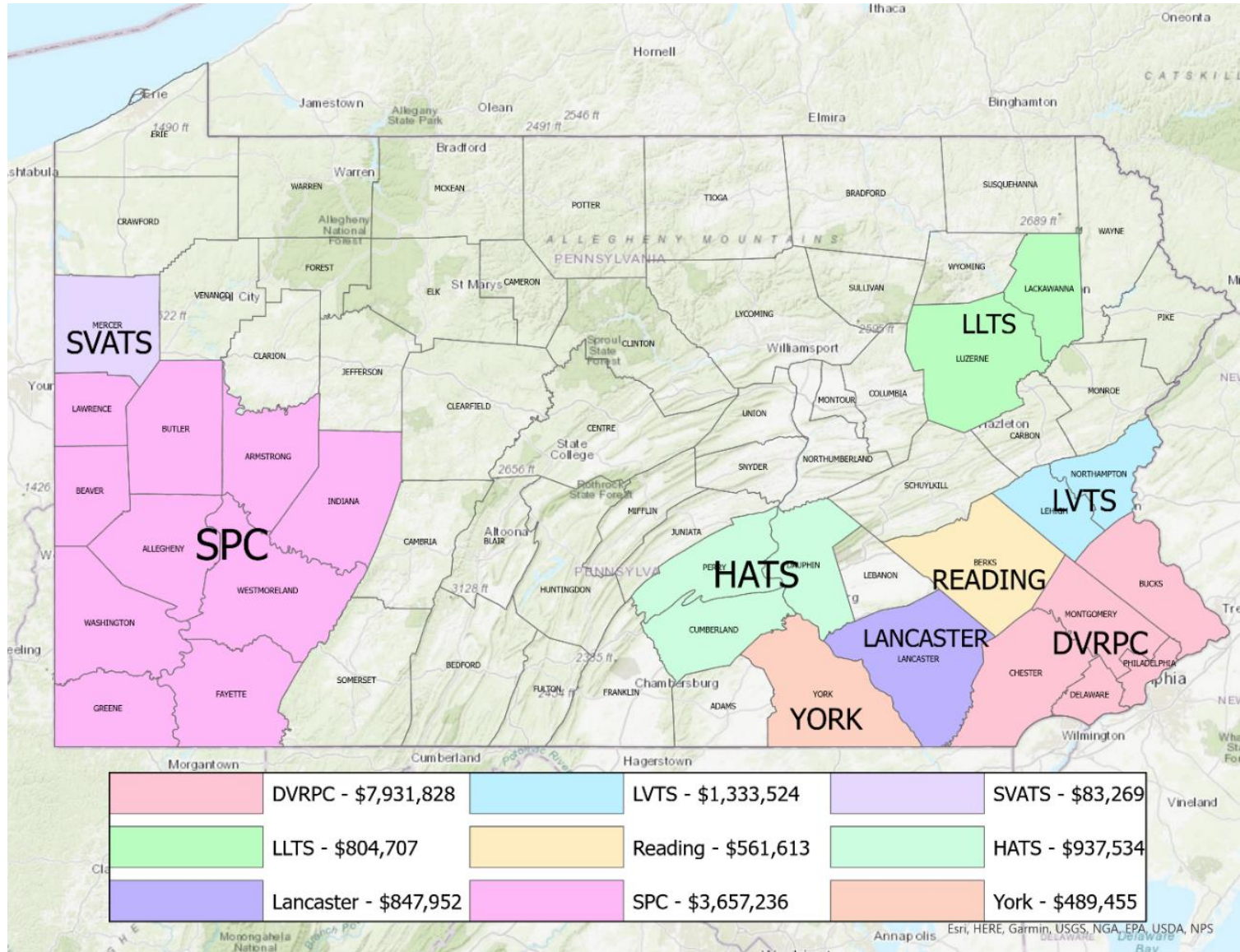
## Large MPO Areas

- ~\$16 million
- 7 participating MPOs
- See Large MPO Program Guidance





# Large MPO Funding



## Transportation Alternatives Set-Aside

- [TA Set-Aside Webpage](#)
- Search “**TA Set-Aside**” on penndot.gov
- Google search “**PennDOT TA Set-Aside**”

The screenshot shows the PennDOT website interface. At the top left is the logo for the Pennsylvania Department of Transportation. A navigation menu includes 'Projects & Programs' (highlighted), 'Doing Business', 'Travel In PA', 'Regional Offices', and 'Blog'. Below the navigation is a horizontal bar with icons for various services: Driver & Vehicle Services, REAL ID, 511PA Travel Info, Submit Concern, Projects, Results, Forms, Pubs & Maps, and Funding. The main content area features a breadcrumb trail: [DOT](#) > [Projects & Programs](#) > [Planning](#) > Transportation Alternatives Set-Aside. The main heading is 'Transportation Alternatives Set-Aside'. Below this, a sub-heading reads 'The 2023 Application Round Will Open May 30, 2023'. A paragraph states: 'Please review updated guidance and information now available under the Resources section to the right.' Another sub-heading reads 'Webinar for Potential Project Sponsors – May 24, 2023 10:00 AM'. A paragraph follows: 'Potential project sponsors or their designated consultants are strongly encouraged to attend. Webinar will be recorded and linked in the Resources section, along with updated Q&A Responses. Details to join the...'. On the right side, there is a 'Resources' section with links to 'TASA Guidance (PDF)', 'PennDOT Districts and MPO/RPO', 'TASA Coordinators (PDF)', and 'Safe Routes to School Information'. Below that is a 'Project Sponsor Webinar - May 24, 2023' section with the text 'Webinar recording and...'. The bottom right corner of the page features the PennDOT logo.



# Application Process

## Registration via PDAuth

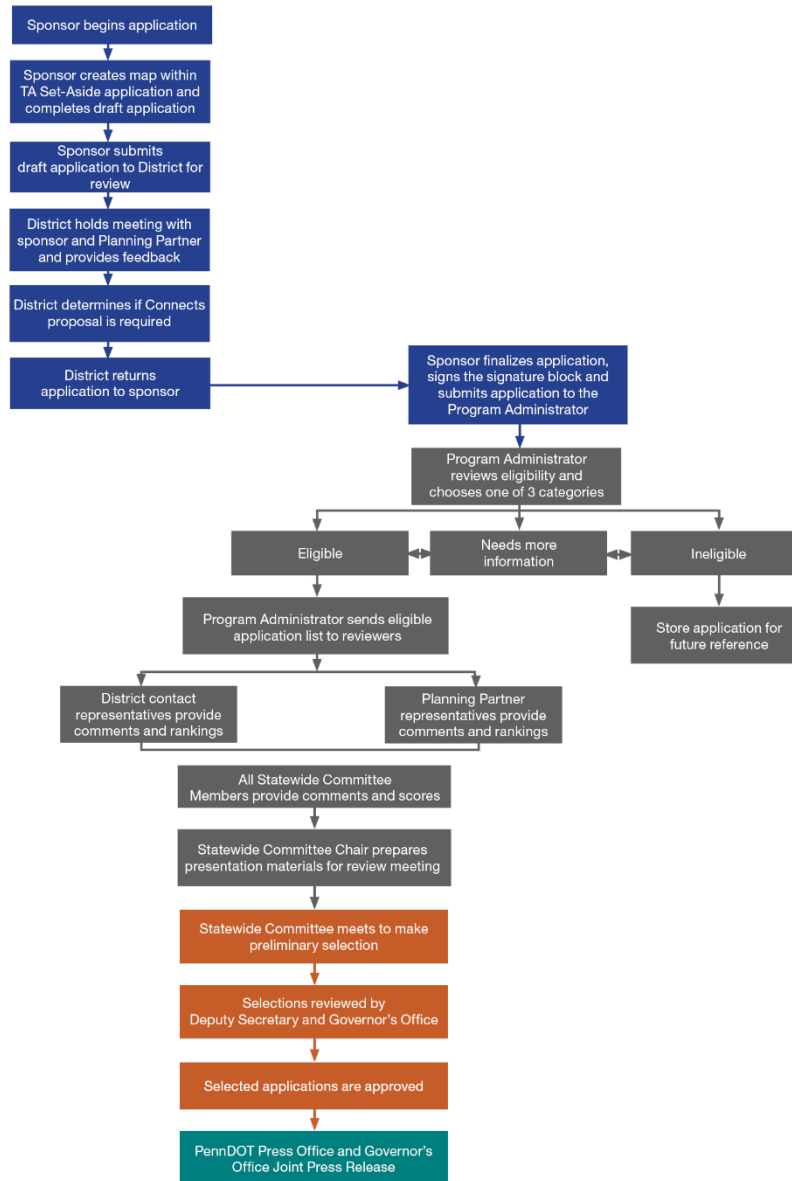
- Must be a registered user in PDAuth in order to complete application (registration information available on Transportation Alternatives Set-Aside Website )

## TA Set-Aside Application

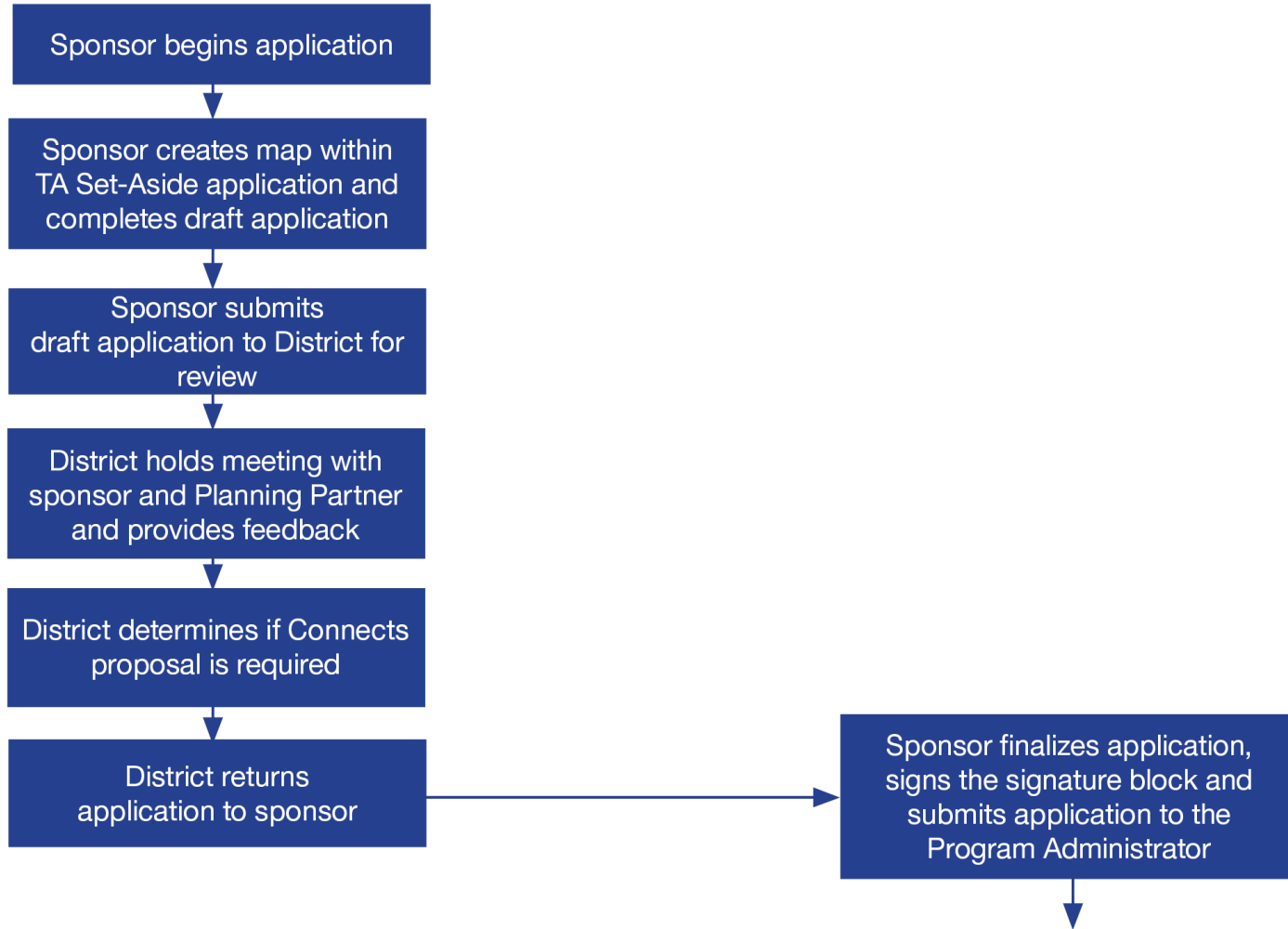
- <https://gis.penndot.gov/tasa/home>
- Log in
- Create New Item
- Create 2023 Draft Application



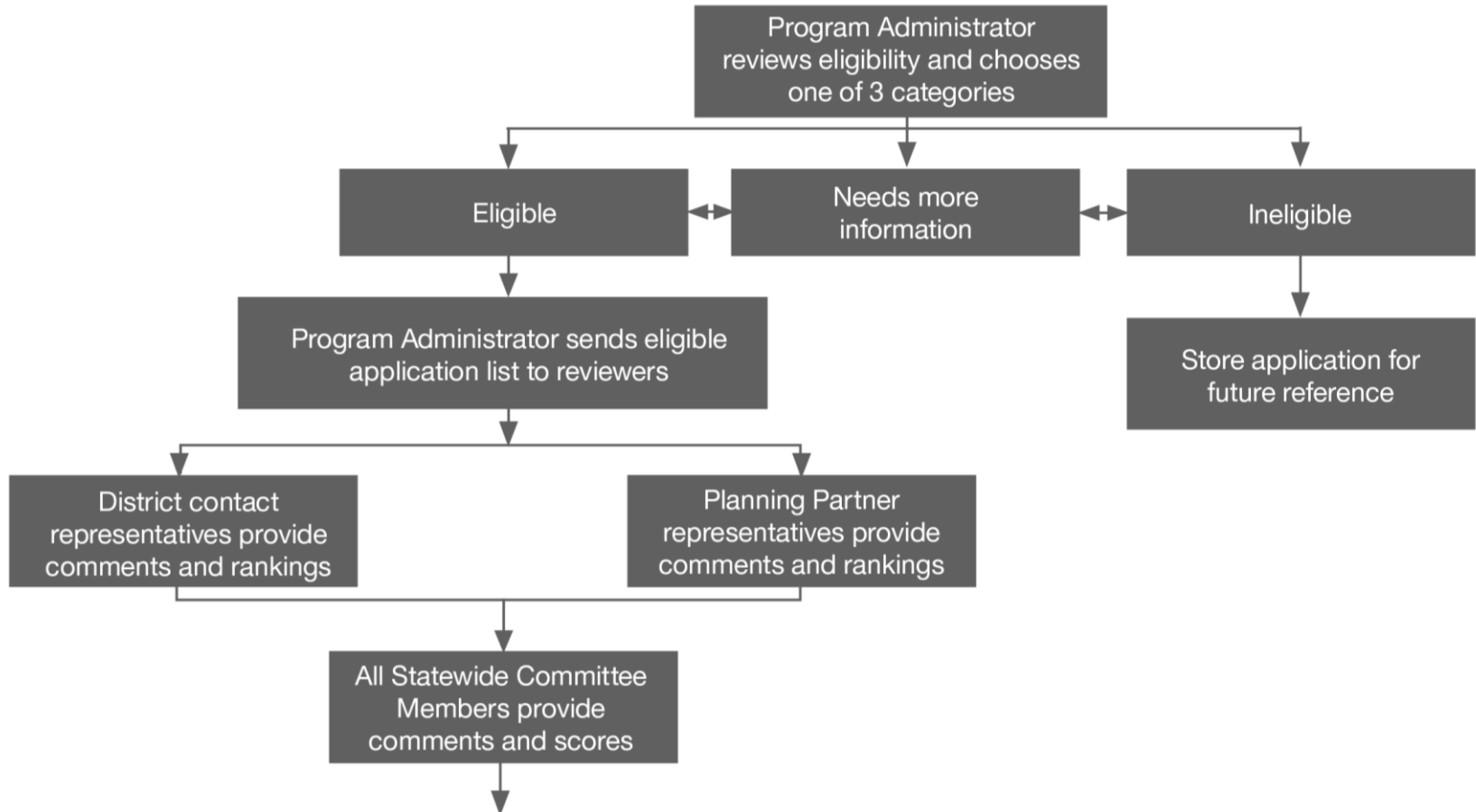
# Application Workflow



# Application



# Review



# Selection





# Application Timeline

<b>Application cycle opens</b>	<b>5/30/2023</b>
<b>Large MPO guidance / selection processes due</b>	<b>7/17/2023</b>
<b>Draft applications due to Districts by 4:00 PM</b>	<b>7/17/2023</b>
<b>Draft application meetings held</b>	<b>7/18/2023 - 9/14/2023</b>
<b>All project applications due by 4:00 PM</b>	<b>9/15/2023</b>



# Statewide Project Selection Criteria

## General Criteria

- Network connectivity
- Consistency with land use, community context and planning
- Collaboration with stakeholders
- Leveraging of other projects or funds
- Cost estimating
- Project value
- Economic impact
- Teachability

## Areas of Emphasis

- Safety always and maybe safety only
- Project delivery
- PennDOT Connects environmental screening
- Environmental justice



# Review and Selection Process

## September – December: Application Review

- MPOs/RPOs
  - Comments/rankings for statewide projects
  - Large MPOs select projects
- Districts
  - Comments/rankings
- Statewide Selection Committee
  - Comments/scores

## January 2024: Project Selection

- Statewide Selection Committee meets
  - Reviews application scores and comments
  - Recommends projects

## Spring 2024: Anticipated Award Announcement



# Requirements For Selected Projects

- Environmental clearance
- Right-of-Way clearance
- Utility clearance
- Railroad clearance
- Applicable permits
- Reimbursement agreement
- Advertise for bids in PennDOT's ECMS System
- Must have contract documents that are ready to be advertised by Spring 2026



# Questions?

Enter questions into the chat window.

## TA Set-Aside Program Office

Email: [RA-pdTASA@pa.gov](mailto:RA-pdTASA@pa.gov)

Phone: 717-775-3276



## Justin Cambric Transportation Alternatives Set-Aside Coordinator

Email: [jcambric@pa.gov](mailto:jcambric@pa.gov)

Phone: 717-705-1532

